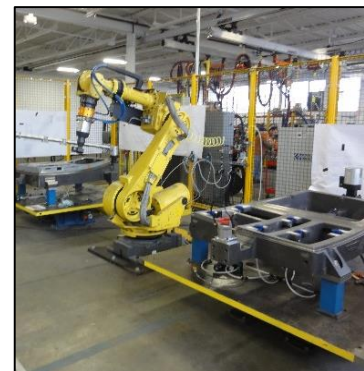
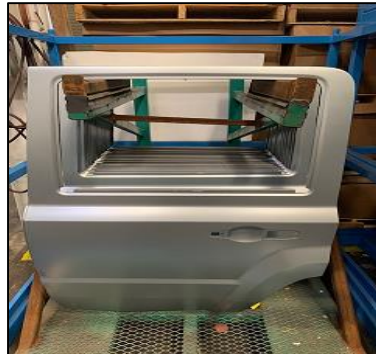


# DIVERSIFIED TOOLING

G • R • O • U • P

## LOW VOLUME PRODUCTION STAMPINGS AND ASSEMBLY



Superior Cam



Midland Design



Bespro Pattern



American Tooling Center

# DIVERSIFIED TOOLING

G • R • O • U • P



Full-Service



Superior Cam



Midland Design



Bespro Pattern



American Tooling Center

**DIVERSIFIED TOOLING**

**G • R • O • U • P**

## **American Tooling Center Facilities**



**ATC Grass Lake – 145,000 sq. ft.**

### **Main Office**

**American Tooling Center, Inc. - Grass Lake**  
**4111 Mt. Hope Road**  
**Grass Lake, MI 49240**  
**Phone: 517-522-8411**  
**Fax: 517-522-8078**

**ATC – 540,000 sq. ft. Total**



**ATC Lansing – 270,000 sq. ft.**

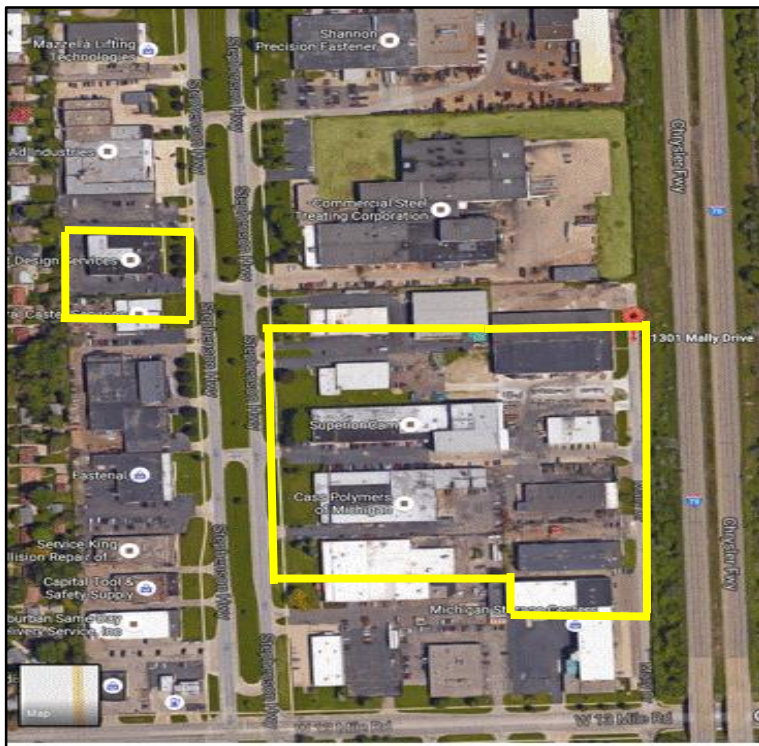


**ATC Jackson – 125,000 sq. ft.**

DIVERSIFIED TOOLING

G • R • O • U • P

## Diversified Tooling Group Facilities



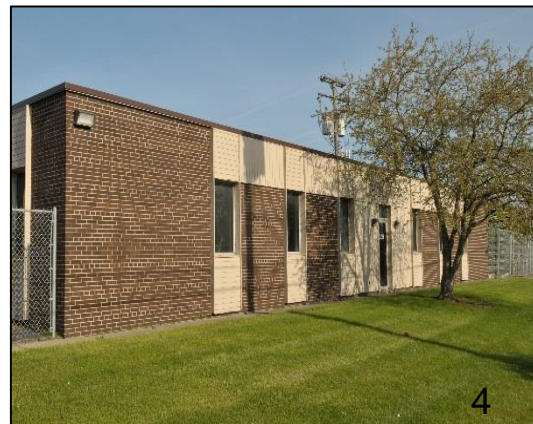
**Midland Design**

**Bespro Pattern**

**Superior Cam**



**Midland Design Service**  
**Bespro Pattern, Inc.**  
**Superior Cam, Inc.**  
**235,000 sq. ft.**



# Quality Certificates



## Superior Cam, Inc.

- ISO 9001:2015

## American Tooling Center, Inc.

- ISO 9001:2015
- IATF 16949:2016
- ITAR – International Traffic in Arms Regulations Compliant
- AWS / NAVSEA Certified
- A2LA Accredited Laboratory



# DIVERSIFIED TOOLING

G • R • O • U • P

## PRODUCTION PANELS & ASSEMBLIES

### CLASS A SKINS

- Door Outer/Inner
- Hood Outer/Inner
- Lift Gate Outer/Inner
- Roof Outer
- Body Side Outer
- Door Ring
- Back wall Outer
- Roof Cap
- Hip Panel
- Grill Surround
- Bumper Fascia
- Floor Pan



Superior Cam



Midland Design



Bespro Pattern



American Tooling Center

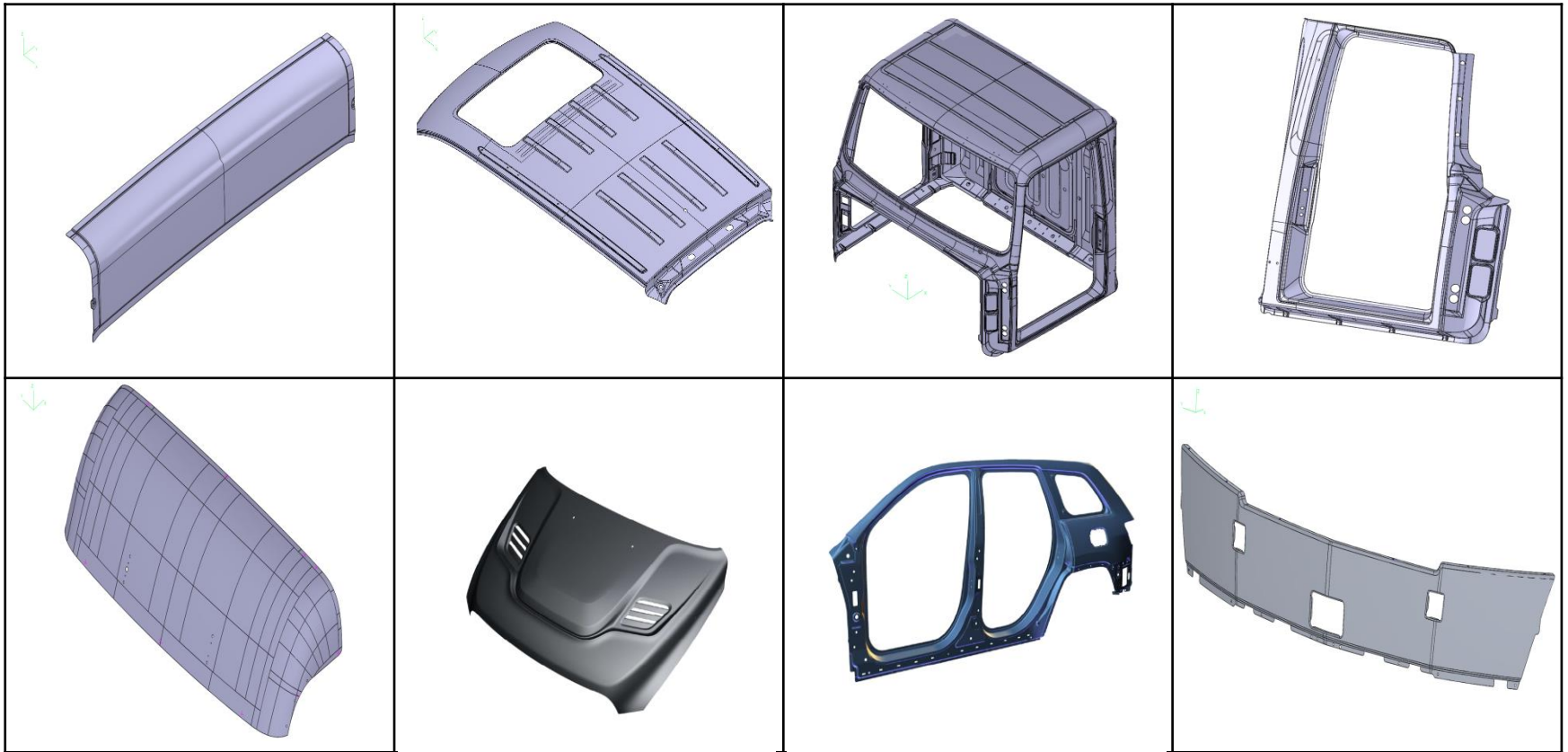
### ASSEMBLIES

- Door Assembly
- Roof Assembly
- Lift Gate Assembly
- Hood Assembly
- Fender Assembly
- Deck Lid Assembly
- Front Strut
- Front End Clip Assembly

DIVERSIFIED TOOLING

G • R • O • U • P

# CLASS A STAMPINGS AND ASSEMBLY



Superior Cam



Midland Design



Bespro Pattern



American Tooling Center

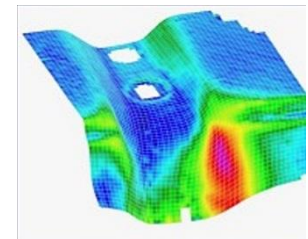
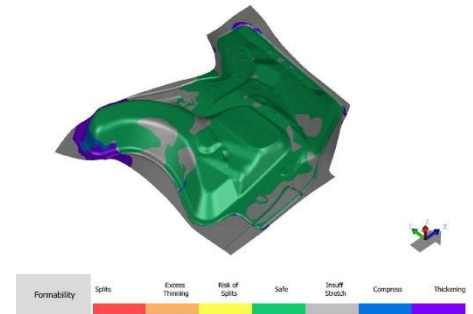
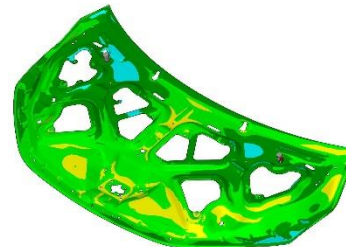
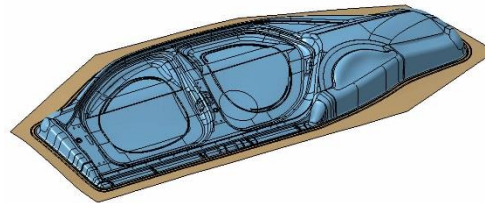
## PRODUCTION VOLUMES

- DTG low volume production shipped over one million stampings and assemblies in 2019.
- Current weekly production shipments averaged 26,000 stampings.
- Diversified Tooling Group is currently utilizing 65% of its total stamping and assembly capacity with 35% available.



# ENGINEERING CAPABILITIES

- DTG will utilize existing tooling or design and build new dies
- Advanced Manufacturing / Engineering
- Material Utilization Engineering
- CAD Draw Developments / Simulations
- FEA Analysis / Product Feasibility
- Full Process Simulations
- Full Cycle Simulations
- CNC Programming
- Global Surface Deformation (OMNI)
- Zero-Phase Die Process Engineering
- Point Cloud Scanning / Color Mapping
- Reverse Engineering
- Checking Fixture Design
- Laser Programming
- Prototype Assembly Fixture Design
- Product Design & Changes
- Product Design Validation
- Laser Cutting Optimization
- GD&T Planning





# DIVERSIFIED TOOLING G • R • O • U • P

## STAMPING CAPABILITIES



| Equipment                   | Quantity | Size                      |
|-----------------------------|----------|---------------------------|
| Cold Stamping Presses       | 49       | 500T-3500T<br>180" x 120" |
| Hot Forming Press           | 1        | 1320T<br>3.0m x 2.2m      |
| 5 Axis Lasers (CO2 & Fiber) | 6        | 169" x 75"                |
| Metal Finishing Departments | 4        | Full Bodysides            |



Superior Cam



Midland Design



Bespro Pattern



American Tooling Center

# DIVERSIFIED TOOLING

G • R • O • U • P

## ASSEMBLY CAPABILITIES



| Equipment  | Quantity | Size                |
|--|----------|---------------------|
| Resistance Weld Stations (Adaptive and Aluminum) | 15       | #1-#6<br>600A-1200A |
| Pedestal & Nut Welders                           | 10       | #1-#3               |
| MIG/TIG Weld Stations                            | 40+      | Up to 450A          |
| Laser Weld (Direct/Remote)                       | 2        | As Required         |
| Adhesive and Sealant Application                 | 4        | Full Bodysides      |
| Rivet, Clinch, SPR, FDS                          | 1        | As Required         |
| Metal Finishing Departments                      | 4        | Full Bodysides      |
| Robotic Roller Hemming Cells                     | 5        | Roofs               |



Superior Cam



Midland Design



Bespro Pattern



American Tooling Center

DIVERSIFIED TOOLING

G • R • O • U • P

# LOW VOLUME DOOR ASSEMBLY



DIVERSIFIED TOOLING

G • R • O • U • P

# LOW VOLUME ROOF ASSEMBLY



# CUSTOMER PLANT SUPPORT

- Launch support supervision is provided to help shorten launch windows.
- On site program management coordinates activities between DTG, tier 2 suppliers and the OEM.
- Local quality engineering support provides feedback to the quality team to assure strict quality standards are met.
- Mobile white light and blue light scanning systems are used for reverse engineering to troubleshoot assembly issues.
- Tool and die specialists are available to recommend or implement revisions to the stamping and assembly tooling.
- Dimensional and functional buyoff engineers assist in reaching PPAPs.
- Specialized departments inside DTG can provide quick solutions to BIW assembly issues during launches (both plastic & sheet metal).
- DTG has experienced sheet metal finishing departments that regularly service OEM's with 60,000 Class A major body panels per year.



# DIVERSIFIED TOOLING

G • R • O • U • P

## LOGISTICS & PACKAGING

- DTG offers 240,000 sq. ft. of indoor warehouse storage.
- Electronic Data Interchange (EDI) systems are used for improved logistics and invoicing efficiencies.
- The logistics team investigates value added opportunities to provide cost savings proposals to the customer.



*DTG is currently shipping product to and from (10) different countries on (5) different continents.*



Superior Cam



Midland Design



Bespro Pattern



American Tooling Center

# DIVERSIFIED TOOLING

G • R • O • U • P

NAVISTAR®

FCA

FIAT CHRYSLER AUTOMOBILES

KIRCHHOFF  
VR VAN-ROB



RIVIAN



TESLA MOTORS



JOHN DEERE



SODECIA

Gestamp



HIROTEC  
AMERICA

TDM  
TROY DESIGN & MANUFACTURING CO.

NISSAN

HONDA

The Power of Dreams

MAGNA

Futaba



DRS Technologies  
A Finmeccanica Company

Nidec  
PRESS & AUTOMATION

MINSTER

HATCH  
STAMPING COMPANY



TOWER  
AUTOMOTIVE



Metalsa  
Quality as a way of life

DAIMLER TRUCKS

GENERAL  
DYNAMICS



TOYOTA

BAY CAST  
INCORPORATED

AUTODIE

APT  
AUTOMATION - PRESSES - TOOLING

AM General®

WESTERN STAR®

# Contact Information

## Sales Team

|   |  |   |
|---|--|---|
| <b>Tim Marasco</b><br>Director of Business Development<br>Office: 248-588-1100<br>Cell: 313-590-2817<br>Fax: 248-588-1104<br>tmarasco@diversifiedtoolinggroup.com | <b>Mark Dembowski</b><br>Sales Engineer<br>Office: 248-588-1100<br>Cell: 586-255-3057<br>Fax: 248-588-1104<br>mdembowski@diversifiedtoolinggroup.com | <b>Mike Austin</b><br>Sales Engineer<br>Office: 248-588-1100<br>Cell: 248-703-8452<br>Fax: 248-588-1104<br>maustin@diversifiedtoolinggroup.com  |
| <b>Evan Ericson</b><br>Sales Engineer<br>Office: 248-588-1100<br>Cell: 313-670-0839<br>Fax: 248-588-1104<br>eericson@diversifiedtoolinggroup.com                  | <b>Steve Doolan</b><br>Sales Engineer<br>Office: 248-588-1100<br>Cell: 248-497-1207<br>Fax: 248-588-1104<br>sdoolan@diversifiedtoolinggroup.com      | <b>Sales Office</b><br>Diversified Tooling Group<br>31240 Stephenson Highway<br>Madison Heights, MI 48071<br>Office: 248-588-1100<br>Fax: 248-588-1104<br>www.diversifiedtoolinggroup.com |

## General Inquiries

|   |   |
|---|---|
| <b>Superior Cam, Inc.</b><br>Office: 248-588-1100<br>Fax: 248-588-1104<br>info@SuperiorCam.com    | <b>Midland Design Service, Inc.</b><br>Office: 248-588-8833<br>Fax: 248-588-0558<br>info@MidlandDesignService.com   |
| <b>Bespro Pattern, Inc.</b><br>Office: 248-588-8833<br>Fax: 248-588-0558<br>rfq@bespropattern.com | <b>American Tooling Center, Inc.</b><br>Office: 517-522-8411<br>Fax: 517-522-8078<br>info@AmericanToolingCenter.com |