

# DIVERSIFIED TOOLING

G • R • O • U • P

FULL SERVICE ENGINEERING AND MANUFACTURING

## DIVERSIFIED TOOLING GROUP AFFILIATED COMPANIES



Superior Cam, Inc.



Midland Design, Inc.



Bespro Pattern, Inc.



American Tooling Center, Inc.

### Equipment & Infrastructure

- 325 Skilled Workforce
- 505,000 Square Feet of Building Space
- 54 CAD Engineering Stations
- 34 Major Stamping Presses
- Automated Production Hot Stamping Press
- 2 Automated 7 Shelf Furnaces
- 23 Horizontal & Vertical CNC Mills
- CNC Polystyrene Pattern Mills
- 5-Axis Laser Cutting Equipment
- Atos Blue and White Cloud Scanners
- CMM Equipment
- Robotic Welding Assembly Cells
- Robotic Roller Hemming Cells
- Water Jet Cutting Equipment
- Press Brake Equipment
- Dedicated Fabrication Facility
- ITAR Registered
- A2LA Accredited Metallurgical Laboratory
- ISO 9001:2008 & TS 16949 Certified
- CQI-9 Certified
- AWS / NAVSEA Certified

### LEADING EDGE TECHNOLOGY



AUTOMATED PRODUCTION  
HOT STAMPING PRESS

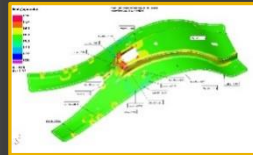


5 AXIS LASER CUTTING



BLUE LIGHT 3D SCANNING

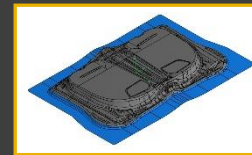
### ADVANCED TOOLING METHODS



PRESS HARDENED STEEL  
FORMABILITY SIMULATIONS



ROBOTIC ROLLER HEMMING  
PRODUCTION



RESEARCH & DEVELOPMENT  
WARM FORM ALUMINUM

### TALENTED WORKFORCE



JOURNEYMEN TOOL & DIE  
APPRENTICESHIP  
PROGRAM SINCE 1993



A2LA ACCREDITED  
METALLURGICAL LABORATORY



DIE DESIGN & ENGINEERING

### Full Service Tool & Die Process

- Cold & Hot Stamping Dies
- Product Manufacturing Feasibility
- CAD Draw Developments
- FEA Simulations
- Sheet Metal Proof Tools & Prototype
- CAD Die Process & Die Design
- CNC Machined Patterns
- Sourcing of Castings
- 2D and 3D CNC Programming
- 2D and 3D CNC Machining
- Stamping Die Assembly
- Dimensional / Functional Tryout
- Static and Dynamic Part Buyoff
- Homeline Support
- Low Volume Stamping and Assemblies
- Robotic Welded Assemblies
- Robotic Roller Hemming Assemblies
- Mobile Metrology Services
- Metallurgical Laboratory Testing
- Domestic / Global Program Management

44 YEARS OF EXPERIENCE, KNOWLEDGE AND INNOVATION